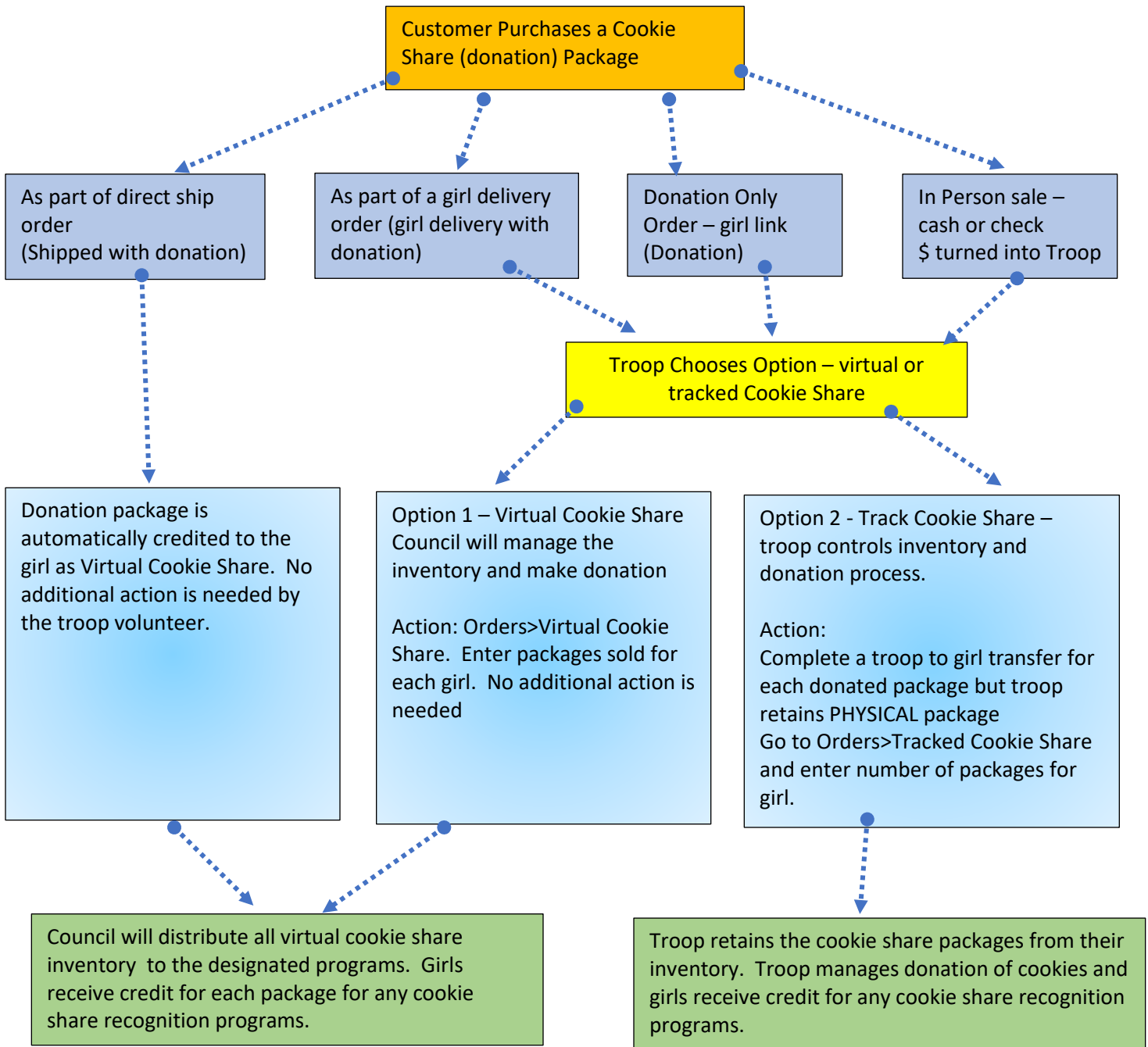


Managing Donated Cookies with Track Cookie Share Option



FOR ORDER TAKING SALES: Any cookie share packages from a donation only pre-paid order or girl delivery with donation order will auto-populate into the troop initial order and cannot be edited. If a parent enters cookie share when reporting paper order card orders, the troop has the option to delete any cookie share packages and then handle as above once the payment is received from the caregiver/girl for that order.